

# VLAN Configuration

---

# Table of Contents

Chapter 1 VLAN Settings.....	1
1.1 VLAN Introduction.....	1
1.2 Dot1Q Tunnel Overview.....	1
1.2.1 Preface .....	1
1.2.2 Dot1Q Tunnel Realization Mode.....	2
1.2.3 Modifying Attributes Through TPID Value.....	2
1.3 VLAN Configuration Task List .....	3
1.4 VLAN Configuration Task.....	3
1.4.1 Adding/Deleting VLAN .....	3
1.4.2 Configuring the Port of the Switch .....	4
1.4.3 Creating/deleting the VLAN interface .....	5
1.4.4 Configuring the Super VLAN Interface .....	5
1.4.5 Monitoring the VLAN Configuration and VLAN State .....	6
1.4.6 Enabling or disabling Dot1 Q Tunnel globally and configuring TPID globally .....	6
1.4.7 Configuring VLAN translation mode and items on a port .....	6
1.4.8 Setting MAC-Based VLAN.....	7
1.4.9 Setting IP Subnet-Based VLAN .....	7
1.4.10 Protocol-Based VLAN.....	8
1.5 Configuration Example .....	9
1.5.1 SuperVLAN Configuration Example .....	9
1.5.2 Dot1Q Tunnel Configuration Examples .....	10
Appendix A Abbreviations .....	15

# Chapter 1 VLAN Settings

## 1.1 VLAN Introduction

The virtual local area network (VLAN) is an exchange network which logically groups the devices in LAN. IEEE issued the IEEE 802.1Q standard in 1999 for realizing the VLAN standard. The VLAN technology can divide a physical LAN logic address into different broadcast domains. Each VLAN has a group of devices which have the same demands but the same attributes with those on the physical LAN. Because it is a logical group, the devices in a same VLAN can be in different physical spaces. The broadcast/unicast flow within a VLAN can not be forwarded to other VLANs. Such advantages as flow control, low device investment, easy network management and high network security, hence, are obtained.

- Supporting port-based VLAN
- Supporting 802.1Q relay mode
- Supporting the access port

The port-based VLAN is to classify the port into a subset of VLAN supported by the switch. If the VLAN subnet includes only one VLAN, the port is the access port; if the VLAN subnet has multiple VLANs, the port is a trunk port; there is a default VLAN among these VLANs, which is the native VLAN of the port and whose ID is **PVID**.

- Supporting VLAN range control

The **vlan-allowed** parameter is used to control the VLAN range; the **vlan-untagged** parameter is used to control the transmission of the untagged VLAN packet from the port to the corresponding VLAN.

VLAN planning modes are various such as based on MAC, IP subnet, protocol, or port. As to these VLAN planning modes, VLAN matchup is conducted by default according to the following order: MAC VLAN, IP-subnet VLAN, protocol VLAN and at last, port VLAN. switches all support the port-based VLAN, but to other VLAN planning modes, different switches support different VLAN planning modes.

## 1.2 Dot1Q Tunnel Overview

### 1.2.1 Preface

Dot1Q Tunnel is a lively name of the tunnel protocol based on 802.1Q encapsulation, which is defined in IEEE 802.1ad. Its core idea is to encapsulate the VLAN tag of the private network to that of the public network, and the packets with two layers of tags traverse the backbone network of ISP and finally a relatively simple L2 VPN tunnel is provided to users. The Dot1Q Tunnel protocol is a simple and manageable protocol, which is realized through static configuration without signaling support and widely applied to enterprise networks consisting of L3 switches or small-scale MAN.

The Dot1Q Tunnel attribute of switches just meets this requirement. As a cheap and compact L2 VPN solution, it is increasingly popular among more and more small-scale users when VPN network is required. At the inside of carrier's network, P device need not support the Dot1Q Tunnel function. That is, traditional L3 switches can meet the requirements fully and protect the investment of the carrier greatly.

- Enables Dot1Q Tunnel globally.
- Supports basic configuration of the downlink port.
- Supports the inter-translation between customer VLAN and SPVLAN on the downlink port, including translation in Flat mode and in QinQ mode.
- Supports the configuration of the uplink port.
- Supports changeable TPID.

For the models of which support all Dot1Q Tunnel attributes, see section 1.2 [Dot1Q Tunnel and Corresponding Models](#).

### 1.2.2 Dot1Q Tunnel Realization Mode

There are two modes to realize Dot1Q Tunnel: port-based Dot1Q Tunnel and Dot1Q Tunnel based on inner CVLAN tag classification.

#### 1) Port-based Dot1Q Tunnel:

When a port of this device receives packets, no matter whether packets have the VLAN tag, the switch will add the VLAN tag of the default VLAN on this port to these packets. Thus, if a received packet has a VLAN tag, the packet become a packet with double tags; if a received packet is untagged, this packet will be added a default VLAN tag of this port.

The packet with a single VLAN tag has the following structure, as shown in table 1:

DA (6B)	SA (6B)	ETYPE(8100) (2B)	VLAN TAG (2B)	ETYPE (2B)	DATA (0~1500B)	FCS (4B)
------------	------------	---------------------	------------------	---------------	-------------------	-------------

Table 1 Packet with a single VLAN tag

The packet with double VLAN tags has the following structure, as shown in table 2:

DA (6B)	SA (6B)	ETYPE(8100) (2B)	SPVLAN Tag (2B)	ETYPE (8100) (2B)	CVLAN Tag (2B)	ETYPE (2B)	DATA (0~1500B)	FCS (4B)
------------	------------	---------------------	-----------------------	-------------------------	-------------------	---------------	-------------------	-------------

Table 2 Packet with double VLAN tags

#### 2) Dot1Q Tunnel based on the inner CVLAN Tag:

The service is distributed according to the CVLAN ID zone of the inner CVLAN tag of Dot1Q Tunnel. The CVLAN zone can be translated into SPVLAN ID and there are two translation modes: Flat VLAN translation and QinQ VLAN translation. In QinQ VLAN translation mode, when a same user uses different services by using different CVLAN IDs, the services can be distributed according to CVLAN ID. For example, the CVLAN ID of bandwidth service ranges between 101 and 200. The difference of the Flat VLAN translation mode and the QinQ VLAN translation mode is that in the flat VLAN translation mode the SPVLAN tag is not on the out-layer of the CVLAN tag, but replaces the CVLAN tag directly.

### 1.2.3 Modifying Attributes Through TPID Value

The structure of the Tag packet of Ethernet frame that is defined by the IEEE 802.1Q protocol is shown below:

TPID 2 byte	User Priority 3 bit	CFI 1 bit	VLAN ID 12 bit
----------------	------------------------	--------------	-------------------

Figure 3 Structure of the VLAN Tag of Ethernet frame

TPID is a field in VLAN Tag and the value of this field regulated by IEEE 802.1Q is 0x8100. switches adopt the default TPID value, that is, 0x8100. Some manufacturers do not set the TPID of the outside tag of the Dot1Q Tunnel packets in their devices to 0x8100. In order to be compatible with these devices, most switches provide the function to modify the TPID value of the Dot1Q Tunnel packets. The TPID value of the PE device can be configured by users. After the ports of these devices receive packets, the TPID value of the outside VLAN tag of these packets will be replaced with user-defined value and then these packets will be forwarded. In this way, the Dot1Q Tunnel packets can be identified by the devices of other manufacturer after they are forwarded into the public network.

### 1.3 VLAN Configuration Task List

- Adding/Deleting VLAN
- Configuring the Port of the Switch
- Creating/deleting the VLAN interface
- Configuring the superVLAN interface
- Monitoring the VLAN Configuration and VLAN State
- Configuring the VLAN-based access control model
- Enabling or disabling Dot1 Q Tunnel globally and configuring TPID globally
- Configuring VLAN translation mode and items on a port
- Setting MAC-Based VLAN
- Setting IP-subnet VLAN

### 1.4 VLAN Configuration Task

#### 1.4.1 Adding/Deleting VLAN

VLAN is grouped according to different functions, project groups or different applications, not based on the physical locations of these users. VLAN has the similar attributes as the physical LAN, but can group terminals in different physical LANs into a same VLAN. One VLAN can have multiple ports, while all unicast/broadcast/multicast packets can be forwarded or diffused to the terminals through a same VLAN. Each VLAN is a logical network; to forward one packet to another VLAN, the routes or bridge must be used to forward it.

Run the following commands to configure VLAN:

Command	Purpose
<b>vlan <i>vlan-id</i></b>	Enters the VLAN configuration mode.
<b>name <i>str</i></b>	Name in the VLAN configuration mode
<b>Exit</b>	Exits the VLAN configuration mode and creates the VLAN.
<b>vlan <i>vlan-range</i></b>	Creates multiple VLANs simultaneously.
<b>no vlan <i>vlan-id</i>   <i>vlan-range</i></b>	Deletes one or multiple VLANs.

You can use the GVRP protocol to dynamically add or delete the VLAN.

## 1.4.2 Configuring the Port of the Switch

The switch's port supports the following modes: the access mode, the relay mode, the VLAN tunnel mode, the VLAN translating tunnel mode and the VLAN tunnel uplink mode.

- The access mode indicates that the port belongs to just one VLAN; only the untagged Ethernet frame can be transmitted and received.
- The relay mode indicates that the port connects other switches and the tagged Ethernet frame can be transmitted and received.
- The VLAN tunnel mode is a sub mode based on the access mode. The packets received by the port are thought to those without tag no matter whether they have VLAN tags, and the switching chip automatically add the PVID of the port to them as their new tag. Some switch models can modify the TPID value of new tag on the downlink port. Hence, the switch omits different VLAN partitions that access the network, and then passes them without change to the other subnet that connects the other port of the same client, realizing transparent transmission.
- The VLAN translating tunnel mode is a sub mode based on the relay mode. The port looks up the VLAN translation table according to the VLAN tag of received packets to obtain corresponding SPVLAN, and then the switching chip replaces the original tag with SPVLAN or adds the SPVLAN tag to the outside layer of the original tag. When the packets are forwarded out of the port, the SPVLAN will be replaced by the original tag or the SPVLAN tag will be removed mandatorily. Hence, the switch omits different VLAN partitions that access the network, and then passes them without change to the other subnet that connects the other port of the same client, realizing transparent transmission.
- The VLAN tunnel uplink mode is a sub mode based on the relay mode. The SPVLAN should be set when packets are forwarded out of the port. If the packets are in the untagged range, all these packets are forwarded out without any change. When the packets are received by the port, their TPIDs will be checked. If difference occurs or they are untagged packets, the SPVLAN tag which contains their own TPID will be added to them as their outer-layer tag.

Each port has a default VLAN and PVID; all VLAN-untagged data received on the port belongs to the packets of the VLAN.

The relay mode can group the port to multiple VLANs; at the same time, you can configure the type of to-be-forwarded packets and the quantity of the corresponding VLANs.

Run the following commands to configure the switch's port:

Command	Purpose
<b>switchport pvid</b> <i>vlan-id</i>	Configures PVID of the switch's interface.
<b>switchport mode</b> { <b>access</b>   <b>trunk</b>   <b>dot1q-tunnel</b> <i>tpid</i>   <b>dot1q-translating-tunnel</b>   <b>dot1q-tunnel-uplink</b> <i>tpid</i> }	Configures the interface mode of the switch.
<b>switchport trunk vlan-allowed</b> ...	Configures the VLAN range of the switch's interface.
<b>switchport trunk vlan-untagged</b> ...	Configures the untagged VLAN ranges of the switch's port.

### 1.4.3 Creating/deleting the VLAN interface

To realize network management or layer-3 routing, you need create a VLAN interface which can be used for designating the IP address and mask of the interface. Run the following command to configure the VLAN interface.

Command	Purpose
<b>[no] interface vlan</b> <i>vlan-id</i>	Creates or deletes a VLAN interface.

### 1.4.4 Configuring the Super VLAN Interface

It is noted that the Super VLAN interface is only supported on layer-3 switches.

The Super Vlan technology provides the following mechanism: hosts that are in different VLANs but connect the same switch can be distributed to the same IPv4 subnet to use the same default gateway, and therefore lots of IP addresses are saved. The SuperVLAN technology classifies many different VLANs into a group, in which these VLANs use a same management interface and the hosts use a same IPv4 network segment and a same gateway. The VLANs belonging to a SuperVLAN are called SubVLANs, any of which cannot possess a management interface through IP configuration.

A SuperVLAN interface can be configured through the command line; the SuperVLAN interface is configured as follows:

Command	Remarks
<b>[no] interface supervlan</b> <i>index</i>	<p>Enters the configuration mode of the SuperVLAN interface. If the designated SuperVLAN interface does not exist, the system will create the SuperVLAN interface.</p> <p>The "index" parameter means the index of the SuperVLAN interface, whose valid value ranges from 1 to 32.</p> <p>The "no" parameter means to delete the SuperVLAN interface.</p>
<b>[no] subvlan</b> [ <i>setstr</i> ] <b>[add addstr] [remove remstr]</b>	<p>Configures the SubVlan of the SuperVLAN. The added SubVLAN does not possess a management interface or belong to other SuperVLAN. In initial state SuperVLAN does not contain any SubVLAN. Each time only one subcommand can be used.</p> <p>The "setstr" parameter means to set the SubVLAN list. For example, list 2, 4-6 means VLAN2, VLAN4, VLAN5 and VLAN6.</p> <p>The "add" parameter means to add VLAN lists in the previous SubVLAN; the "addstr" parameter means the list string, whose format is the same above.</p> <p>The "remove" parameter means to delete VLAN lists from the previous SubVLAN list; the "remstr" parameter means the list string, whose format is the same above.</p> <p>The "no" parameter means to delete all SubVLANs of a SuperVLAN. The "no" subcommand cannot be used together with other subcommands.</p>

After a SuperVLAN interface is configured, you can configure an IP address for the SuperVLAN interface; the SuperVLAN interface is also a routing port and any configuration for a port can be configured on this routing port.

#### 1.4.5 Monitoring the VLAN Configuration and VLAN State

To monitor the configuration and state of VLAN and Dot1Q tunnel, run the following commands in EXEC mode:

Command	Purpose
<b>show vlan [ id <i>x</i>   interface <i>intf</i>   dot1q-tunnel [interface <i>intf</i>   mac-vlan   subnet ]</b>	Displays the configuration and state of VLAN or Dot1Q tunnel.
<b>show interface {vlan   supervlan} <i>x</i></b>	Displays the state of the VLAN interface or that of the SuperVLAN interface.

#### 1.4.6 Enabling or disabling Dot1 Q Tunnel globally and configuring TPID globally

After Dot1Q Tunnel is enabled globally, their ports can be defaulted as the downlink ports of Dot1Q Tunnel, and the SPVLAN tag will be added to incoming packets.

As to a switch that supports the global TPID, after global TPID configuration, the TPID of SPVLAN tag will be changed to the global TPID when the packets are transmitted by a switch on its uplink port; when the packets are received by a switch on its uplink port, the SPVLAN tag will be identified whether it is the configured global TPID; if the SPVLAN tag is not the configured global TPID, or the packets are untagged packets, the configured global TPID of SPVLAN tag will be mandatorily added as the out-layer label of these packets.

The command to enable dot1q-tunnel and TPID globally is shown in the following table:

Command	Purpose
<b>dot1q-tunnel [<i>tpid</i>]</b>	Configures the global dot1q-tunnel and the global TPID on a switch.

#### 1.4.7 Configuring VLAN translation mode and items on a port

Both the VLAN translating mode and the VLAN translating items validate in dot1q-translating-tunnel mode after they are configured. The translation modes fall into two kinds: the Flat mode and the QinQ mode. In Flat mode, the CLAN tag of packets which are received by the dot1q-translating-tunnel downlink port will be used as an index to look up the VLAN translating list. The CVLAN will be replaced by detected SPVLANs; when the packets are forwarded out of the port, the SPVLAN will then be replaced by CVLAN. In QinQ mode, the CLAN tag of packets which are received by the dot1q-translating-tunnel downlink port will be used as an index to look up the VLAN translating list and then the detected SPVLANs will form into SPVLAN tag to be added to the outside of CVLAN tag; when the packets are forwarded out of the port, the SPVLAN tag will then be removed.

When the VLAN translating items are configured on a port, the mapping between CVLAN and multiple SPVLANs can be configured in QinQ mode. To configure the mapping between CVLAN and multiple SPVLANs in flat mode, you have to configure



QoS and then the correct transformation from SPVLAN to CVLAN can be conducted when packets are transmitted out from this port.

The command to configure the VLAN translation mode and translation items is shown in the following table:

Command	Purpose
<b>switchport dot1q-translating-tunnel mode {flat   qinq} translate {oldvlanid   oldvlanlist} newvlan [priority]</b>	Configures the VLAN translation mode and translation item.

#### 1.4.8 Setting MAC-Based VLAN

The MAC-based VLAN is a VLAN planning mode based on the source MAC address of the packet. When a port of a device receives an untagged packet, the device will take the source MAC address of the packet as the matchup keyword and know the home VLAN by looking for the MAC VLAN entry.

The settings of the MAC-based VLAN includes adding/deleting MAC VLAN entry and enabling/disabling the MAC VLAN function on the port.

In global configuration mode run the following commands to add or delete the MAC VLAN entry.

Command	Purpose
<b>mac-vlan mac-address mac-addr vlan vlan-id</b>	Adds a MAC VLAN entry.
<b>no mac-vlan mac-address mac-addr</b>	Deletes a MAC VLAN entry.

The MAC-based VLAN function takes effect only on a port on which this function is enabled. In port configuration mode, run the following commands respectively to enable or disable the MAC VLAN function on a port.

Command	Purpose
<b>[no] switchport mac-vlan</b>	Enables or disables the MAC-based VLAN function on a port.

Note: In port access mode, an incoming packet will be dropped if its VLAN, which is obtained through the matchup of MAC VLAN entry, is not the PVID of the port. Hence, if not necessary, do not set the port mode, which is to enable MAC VLAN, to **access**.

#### 1.4.9 Setting IP Subnet-Based VLAN

IP subnet-based VLAN is a VLAN planning mode based on the source IP address and configured subnet mask of a packet. When a device receives an untagged packet on one of its ports, the device will locate the VLAN of this packet according to the source IP address of the packet and the configured subnet mask.

The settings of the IP-subnet VLAN includes adding/deleting the subnet VLAN entry and enabling/disabling the subnet VLAN function on the port.

In global configuration mode run the following commands to add or delete the subnet VLAN entry.

Command	Purpose
<b>[no] subnet { any   ip-addr mask }</b>	Adds or deletes a subnet VLAN entry.

The IP-subnet VLAN function takes effect only on a port on which this function is enabled. In port configuration mode, run the following commands respectively to enable or disable the subner VLAN function on a port.

Command	Purpose
<b>[no] switchport vlan-subnet enable</b>	Enables or disables the IP-subnet VLAN function on the ports.

Note: In port access mode, an incoming packet will be dropped if its VLAN, which is obtained through the matchup of subnet VLAN entry, is not the PVID of the port. Hence, if not necessary, do not set the port mode, which is to enable subnet VLAN, to **access**.

#### 1.4.10 Protocol-Based VLAN

The protocol-based VLAN is a VLAN planning mode which is based on the protocol to which the received packet belongs. When a switch receives an untagged packet on one of its ports, the switch will determine the VLAN of the packet according to the protocol of this packet.

At present, there are two ways to determine which protocol a packet belongs to: one is by way of the encapsulation format of a packet and the value of a special field in a packet; the other is by way of the value of the EtherType field in a packet. The way to determine a protocol of a packet may vary with different switches.

Accordingly, as to different switches, the protocol-based VLAN probably has two different configuration methods: one is to add/delete the protocol template globally and add/delete the association of a protocol template on a port, while the other is to add/delete a protocol-based VLAN entry globally and add/delete the protocol-based VLAN on a port.

- Adding/deleting a protocol template globally and adding/deleting the association of a protocol template on a port

In global configuration mode, run the following commands to add or delete a protocol template.

Command	Purpose
<b>protocol-vlan</b> <i>protocol_index</i> <b>frame-type</b> <b>{ ETHERII   SNAP   LLC }</b> <b>ether-type</b> <i>etype-id</i>	Adds a protocol template.
<b>no protocol-vlan</b> <i>protocol_index</i>	Deletes a protocol template.

Note: When the **frame-type** parameter is LLC, the high and low bytes in the Ether-Type field correspond to DSAP and SSAP in a packet respectively.

A protocol template only takes effect on a port where the protocol template is applied. The same protocol template can correspond to different VLANs on different ports. In port configuration mode, run the following commands to add or delete the association of a protocol template.

Command	Purpose
<b>switchport protocol-vlan</b> <i>protocol_index</i> <b>vlan</b> <i>vlan-id</i>	Adds the association of a protocol template.
<b>no switchport protocol-vlan</b> <i>protocol_index</i>	Deletes the association of a protocol template.

- Adding/deleting the protocol-based VLAN entry globally and enabling/disabling the protocol-based VLAN on a port

In global configuration mode, run the following commands to add or delete the protocol-based VLAN entry.

Command	Purpose
<b>protocol-vlan ether-type</b> <i>etype-id</i> <b>vlan</b> <i>vlan-id</i>	Adds a protocol-based VLAN entry.
<b>no protocol-vlan ether-type</b> <i>etype-id</i>	Deletes a protocol-based VLAN entry.

The globally set protocol-based VLAN entry only takes effect on the port where the protocol-based VLAN is enabled. In port configuration mode, run the following commands respectively to enable or disable the protocol-based VLAN on a port.

Command	Purpose
<b>[no] switchport protocol-vlan</b>	Enables or disables the protocol-based VLAN on a port.

Note: In port access mode, an incoming packet will be dropped if its VLAN, which is obtained through the matchup of the protocol-based VLAN entry, is not the PVID of the port. Hence, if not necessary, do not set the port mode, which is to enable protocol-based VLAN, to **access**.

## 1.5 Configuration Example

### 1.5.1 SuperVLAN Configuration Example

The network topology is shown in the following figure:

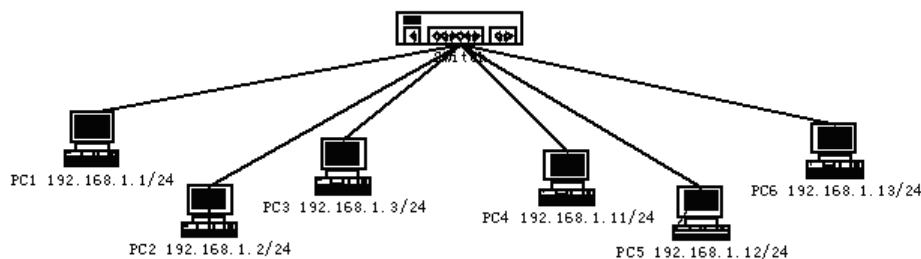


Figure 8 SuperVLAN

Six PC users from PC1 to PC6 connect six ports of a switch respectively. The IP addresses of these PCs belong to the **192.168.1.0/24** network segment. These

PCs can ping each other successfully and the switch can be controlled through the IP address, 192.168.1.100, but group PC1-PC3 and group PC4-PC6 are in different layer-2 broadcast domains respectively. In this case, ports 1, 2 and 3 can be configured to be in VLAN1 and ports 4, 5 and 6 to be in VLAN2, and then vlan1 and vlan2 can be added as a SubVLAN of a same SuperVLAN. To do these, you need do the following configurations:

```
interface fastethernet 0/4
switchport pvid 2
!
interface fastethernet 0/5
switchport pvid 2
!
interface fastethernet 0/6
switchport pvid 2
!
interface supervlan 1
subvlan 1,2
ip address 192.168.1.100 255.255.255.0
ip proxy-arp subvlan
!
```

### 1.5.2 Dot1Q Tunnel Configuration Examples

The following typical solutions show how to apply Dot1Q tunnel.

#### a. Example 1

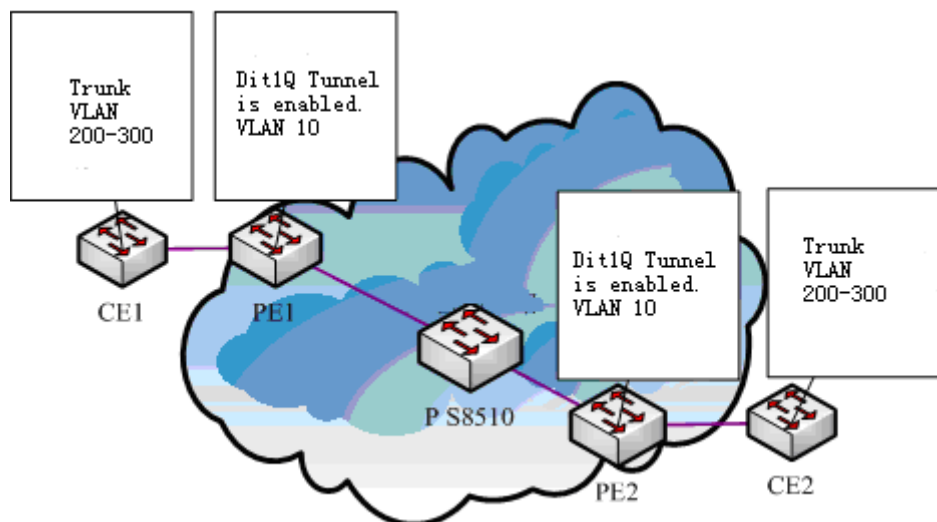


Figure 4 Typical configuration of Dot1Q tunnel

As shown in the figure above, port F0/1 of CE1 connects port F0/1 (or port G0/1) of PE1, PE1 connects S8510 on port F0/2 (or port G0/2), PE2 connects S8510 on port F0/2 (or port G0/2), and port F0/1 (or port G0/1) of PE2 connects port F0/1 of CE1.

Port f0/1 of PE is set to be the access port of VLAN 10 and on them Dot1Q Tunnel is enabled. However, the ports of CE still need Trunk VLAN 200-300, enabling the link between CE and PE to be an asymmetrical link. In this case, the public network only needs to distribute users a VLAN ID, 10. No matter how many VLAN IDs of private network are planned in the user's network, the newly distributed VLAN ID of the

public network will be mandatorily inserted into the tagged packets when these packets enter the backbone network of ISP. These packets then pass through the backbone network through the VLAN ID of the public network, reach the other side of the backbone network, that is, the PE devices, get rid of the VLAN tag of the public network, resume the user's packets and at last are transmitted to the CE devices of the users. Therefore, the packets that are forwarded in the backbone network have two layers of 802.1Q tag headers, one being the tag of the public network and the other being the tag of the private network. The detailed flow of packet forwarding is shown as follows:

- 1) Because the egress port of CE1 is a Trunk port, all the packets that are transmitted by users to PE1 have carried the VLAN tag of the private network (ranging from 200 to 300). One of these packets is shown in figure 5.

DA (6B)	SA (6B)	ETYPE(8100) (2B)	VLAN TAG (2B)	ETYPE (2B)	DATA (0~1500B)	FCS (4B)
------------	------------	---------------------	------------------	---------------	-------------------	-------------

Figure 5 Structure of a packet from CE1

- 2) After the packets enter PE1, PE1, for the ingress port is the access port of Dot1Q tunnel, ignores the VLAN tag of the private network but inserts the default VLAN 10's tag into these packets, as shown in figure 6.

DA (6B)	SA (6B)	<b>ETYPE(8100)</b> <b>(2B)</b>	<b>SPVLAN</b> <b>Tag</b> <b>(2B)</b>	ETYPE (8100) (2B)	CVLAN Tag (2B)	ETYPE (2B)	DATA (0~1500B)	FCS (4B)
------------	------------	-----------------------------------	--	-------------------------	-------------------	---------------	-------------------	-------------

Figure 6 Structure of a packet going into PE1

- 3) In the backbone network, packets are transmitted along the port of trunk VLAN 10. The tag of the private network is kept in transparent state until these packets reach PE2.
- 4) PE2 discovers that the port where it connects CE2 is the access port of VLAN 10, removes the tag header of VLAN 10 according to 802.1Q, resumes the initial packets of users, and transmit the initial packets to CE2, as shown in figure 7.

DA (6B)	SA (6B)	ETYPE(8100) (2B)	VLAN TAG (2B)	ETYPE (2B)	DATA (0~1500B)	FCS (4B)
------------	------------	---------------------	------------------	---------------	-------------------	-------------

Figure 7 Structure of a packet from PE2

Seen from the forwarding flow, Dot1Q Tunnel is very concise for the signaling is not required to maintain the establishment of the tunnel, which can be realized through static configuration.

As to the typical configuration figure of Dot1Q Tunnel, Our products of different models are configured as follows when they run as PE (PE1 configuration is same to PE2).

- 1) SWITCH A Dot1Q Tunnel Configuration

```
Switch_config#dot1q-tunnel
```

```
Switch_config_f0/1#switchport pvid 10
```

```
Switch_config_f0/2#switchport mode trunk
```

```
Switch_config_f0/2#switchport trunk vlan-untagged 1-9,11-4094
```

## 2) SWITCH B Dot1Q Tunnel Configuration

```
Switch_config_g0/1#switchport mode dot1q-tunnel
```

```
Switch_config_g0/1#switchport pvid 10
```

```
Switch_config_g0/2#switchport mode trunk
```

```
Switch_config_g0/2#switchport trunk vlan-untagged 1-9,11-4094
```

### b. Example 2

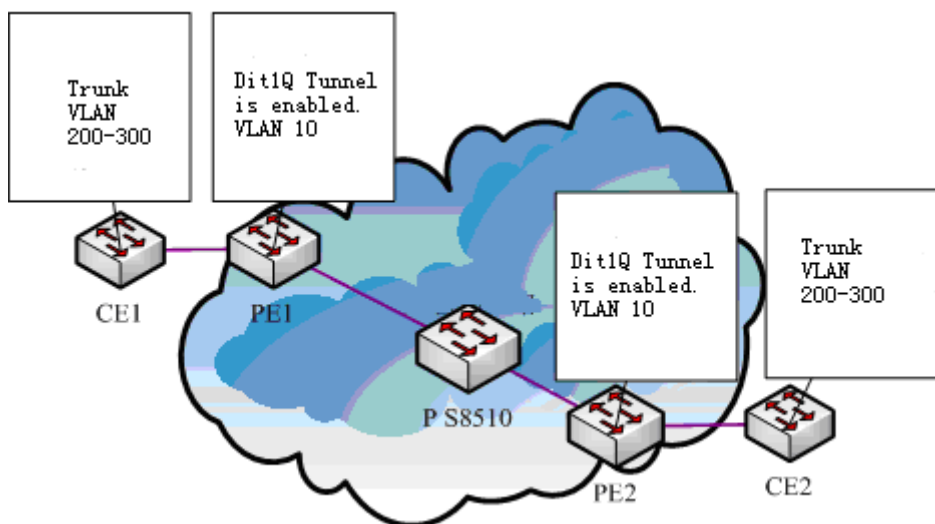


Figure 8 Typical configuration of Dot1Q tunnel (2)

In figure 4, if the TPID in the SPVLAN tag in the packets that PE transmits to P is required to be 0x9100, as shown in figure 8, PEs must be switches that support TPID modification, such as the following listed models: The configuration for each switch model is shown as follows (PE1 is configured the same as PE2):

### 1) SWITCH A Dot1Q Tunnel Configuration

```
Switch_config#dot1q-tunnel 0x9100
```

```
Switch_config_f0/1#switchport pvid 10
```

```
Switch_config_f0/2#switchport mode dot1q-tunnel-uplink
```

```
Switch_config_f0/2#switchport trunk vlan-untagged 1-9,11-4094
```

### 2) SWITCH B Dot1Q Tunnel Configuration

```
Switch_config#dot1q-tunnel
```

```
Switch_config_f0/1#switchport mode dot1q-tunnel 0x9100
```

```
Switch_config_f0/1#switchport pvid 10
```

```
Switch_config_f0/2#switchport mode dot1q-tunnel-uplink 0x9100
```

```
Switch_config_f0/2#switchport trunk vlan-untagged 1-9,11-4094
```

### 3) SWITCH C Dot1Q Tunnel Configuration

```
Switch_config#dot1q-tunnel
```

```
Switch_config_g0/1#switchport pvid 10
```

```
Switch_config_g0/2#switchport mode dot1q-tunnel-uplink 0x9100
```

```
Switch_config_g0/2#switchport trunk vlan-untagged 1-9,11-4094
```

## c. Example 3

If different services of a same user are dealt with and the access terminal of a user connects the UNI port of PE, the Dot1Q tunnel VLAN translation must be used to differentiate different services and carry different QoS standards.

As shown in figure 9, the carrier distributes three VLANs for each user and each VLAN corresponds to a kind of service. For example, user 1 is distributed with 3 VLANs, that is, VLAN 1001, VLAN 2001 and VLAN 3001, among which VLAN 1001 is for broadband services, VLAN 2001 is for VoIP services and VLAN 3001 is for IPTV services. When a service reaches the UNI port of the PE switch, an out-layer label will be added to the service according to its VLAN ID (different services are added with different outer-layer labels). If the out-layer label of the user data is 1001, the user data will be added with label 1001 directly on its outer layer. As to user 2, different services can be distributed with different VLAN tags. The outer-layer tag of user 2 is different from that of user 1 mainly for differentiating the location of CE and also locating users.

Device	Service	Inner-layer CVLAN tag	Outer-layer SPVLAN tag	Flow classification principle
CE1	broadband	101-200	1001	CVLAN domain
	VOIP	201-300	2001	
	IPTV	301-400	3001	
CE2	broadband	101-200	1002	
	VOIP	201-300	2002	
	IPTV	301-400	3002	

In this networking solution, the two layers of tags differentiate services very well and locate users. The outer-layer tag identifies the location of CE and a service, while the inner-layer tag identifies the location of a user.

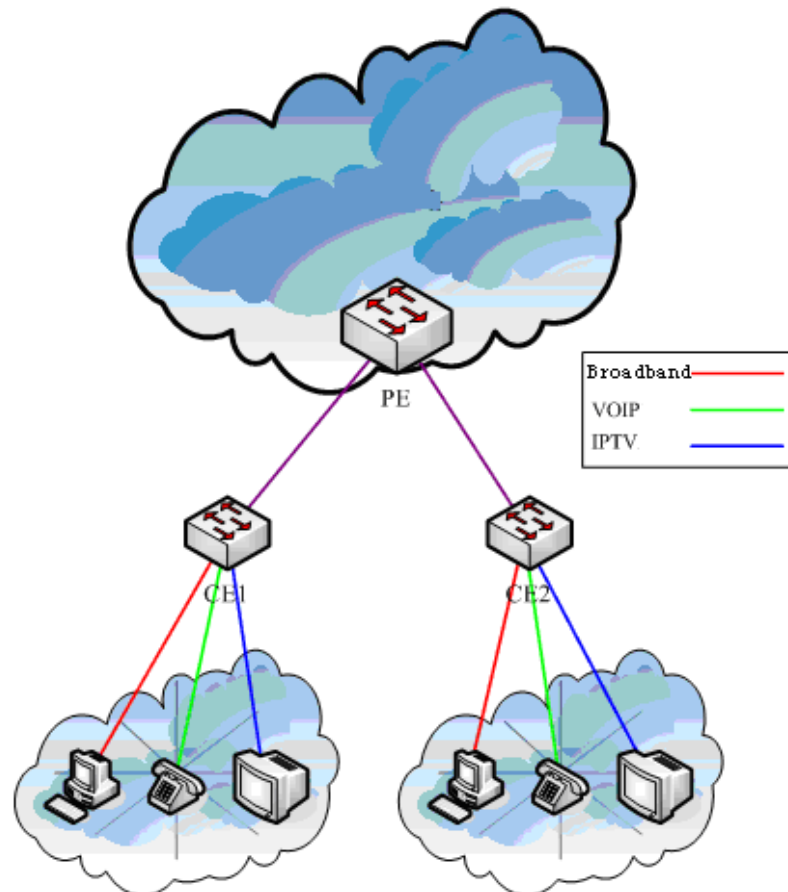


Figure 9 Typical configuration of Dot1Q tunnel (3)

In figure 9, CE1 connects port G0/1 of PE1, CE2 connects port G0/2 of PE1 and the Dot1Q Tunnel NNI port of PE is port G0/3. If switch is run as PE, the following configuration need be done:

#### 1) SWITCH Dot1Q Tunnel Configuration

```
Switch_config#dot1q-tunnel
```

```
Switch_config_g0/1#switchport mode dot1q-translating-tunnel
```

```
Switch_config_g0/1#switchport dot1q-translating-tunnel mode QinQ translate 101-200 1001
```

```
Switch_config_g0/1#switchport dot1q-translating-tunnel mode QinQ translate 201-300 2001
```

```
Switch_config_g0/1#switchport dot1q-translating-tunnel mode QinQ translate 301-400 3001
```

```
Switch_config_g0/2#switchport mode dot1q-translating-tunnel
```

```
Switch_config_g0/2#switchport dot1q-translating-tunnel mode QinQ translate 101-200 1002
```

```
Switch_config_g0/2#switchport dot1q-translating-tunnel mode QinQ translate 201-300 2002
```

```
Switch_config_g0/2#switchport dot1q-translating-tunnel mode QinQ translate 301-400 3002
```

```
Switch_config_g0/3#switchport mode dot1q-tunnel-uplink
```



## Appendix A Abbreviations

Abbrev.	Full Name
VPN	Virtual Private Network
TPID	Tag Protocol Identifier
QoS	Quality of Service
P	provider bridged network core
PE	provider bridged network edge
CE	customer network edge
UNI	user-network interface
NNI	network-network interface
CVLAN	Customer VLAN
SPVLAN	Service provider VLAN