

# Network Time Management Configuration

## Оглавление

1. SNTP CONFIGURATION	3
1.1. Introduction to SNTP	3
1.2. Typical Examples of SNTP Configuration	4
2. NTP FUNCTION CONFIGURATION	5
2.1. Introduction to NTP Function	5
2.2. NTP Function Configuration Task List	5
2.3. Typical Examples of NTP Function	9
2.4. NTP Function Troubleshooting	9
3. DNSV4/V6 CONFIGURATION	11
3.1. Introduction to DNS	11
3.2. DNSv4/v6 Configuration Task List	12
3.3. Typical Examples of DNS	15
3.4. DNS Troubleshooting	16
4. SUMMER TIME CONFIGURATION	17
4.1. Introduction to Summer Time	17
4.2. Summer Time Configuration Task Sequence	17
4.3. Examples of Summer Time	17
4.4. Summer Time Troubleshooting	18

## 1. SNTP CONFIGURATION

### 1.1. Introduction to SNTP

The Network Time Protocol (NTP) is widely used for clock synchronization for global computers connected to the Internet. NTP can assess packet sending/receiving delay in the network, and estimate the computer's clock deviation independently, so as to achieve high accuracy in network computer clocking. In most positions, NTP can provide accuracy from 1 to 50ms according to the characteristics of the synchronization source and network route.

Simple Network Time Protocol (SNTP) is the simplified version of NTP, removing the complex algorithm of NTP. SNTP is used for hosts who do not require full NTP functions; it is a subset of NTP. It is common practice to synchronize the clocks of several hosts in local area network with other NTP hosts through the Internet, and use those hosts to provide time synchronization service for other clients in LAN. The figure below depicts a NTP/SNTP application network topology, where SNTP mainly works between second level servers and various terminals since such scenarios do not require very high time accuracy, and the accuracy of SNTP (1 to 50 ms) is usually sufficient for those services.

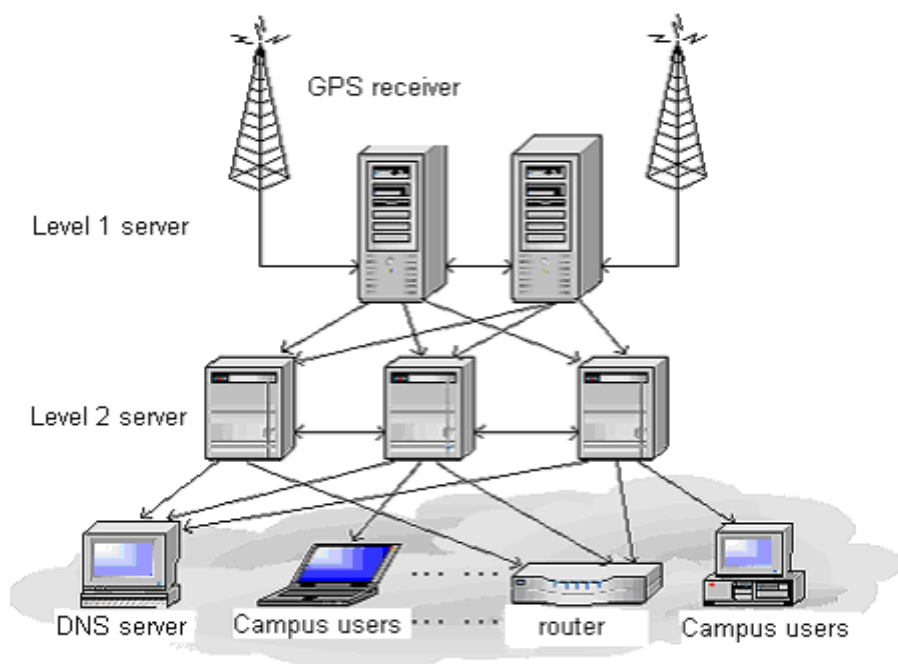


Fig 1-1 Working Scenario

Switch implements SNTPv4 and supports SNTP client unicast as described in RFC2030; SNTP client multicast and unicast are not supported, nor is the SNTP server function.

## 1.2. Typical Examples of SNTP Configuration

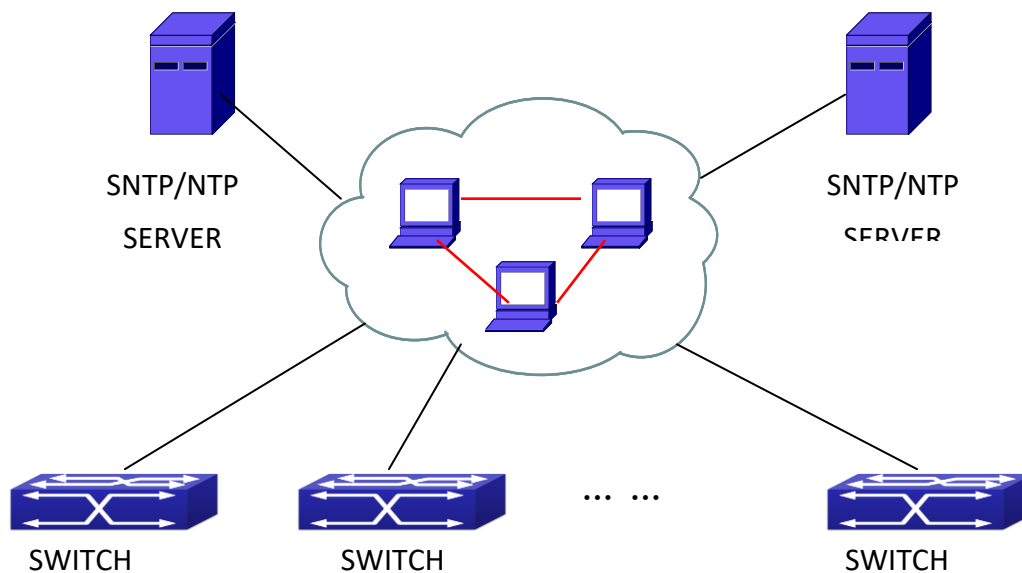


Fig 1-2 Typical SNTP Configuration

All switches in the autonomous zone are required to perform time synchronization, which is done through two redundant SNTP/NTP servers. For time to be synchronized, the network must be properly configured. There should be reachable route between any switch and the two SNTP/NTP servers.

Example: Assume the IP addresses of the SNTP/NTP servers are 10.1.1.1 and 20.1.1.1, respectively, and SNTP/NTP server function (such as NTP master) is enabled, then configurations for any switch should like the following:

```
Switch#config  
Switch(config)#sntp server 10.1.1.1
```

## 2. NTP FUNCTION CONFIGURATION

### 2.1. Introduction to NTP Function

The NTP (Network Time Protocol) synchronizes timekeeping spans WAN and LAN among distributed time servers and clients, it can get millisecond precision. The introduction of event, state, transmit function and action are defined in RFC-1305.

The purpose of using NTP is to keep consistent timekeeping among all clock-dependent devices within the network so that the devices can provide diverse applications based on the consistent time.

For a local system running NTP, its time can be synchronized by other reference sources and can be used as a reference source to synchronize other clocks, also can synchronize each other by transmit NTP packets.

### 2.2. NTP Function Configuration Task List

1. To enable NTP function
2. To configure NTP server function
3. To configure the max number of broadcast or multicast servers supported by the NTP client
4. To configure time zone
5. To configure NTP access control list
6. To configure NTP authentication
7. To specified some interface as NTP broadcast/multicast client interface
8. To configure some interface can't receive NTP packets
9. To configure the request packet sending interval of ntp client
10. Display information
11. Debug

#### 1. To enable NTP function

Command	Explication
Global Mode	
<code>ntp enable</code> <code>ntp disable</code>	To enable or disable NTP function.

## 2. To configure NTP server function

Command	Explication
Global Mode	
<pre>ntp server {&lt;ip-address&gt;   &lt;ipv6-address&gt;} [version &lt;version_no&gt;] [key &lt;key-id&gt;] no ntp server {&lt;ip-address&gt;   &lt;ipv6-address&gt;}</pre>	To enable the specified time server of time source.

## 3. To configure the max number of broadcast or multicast servers supported by the NTP client

Command	Explication
Global Mode	
<pre>ntp broadcast server count &lt;number&gt; no ntp broadcast server count</pre>	Set the max number of broadcast or multicast servers supported by the NTP client. The no operation will cancel the configuration and restore the default value.

## 4. To configure time zone

Command	Explication
Global Mode	
<pre>clock timezone WORD {add   subtract} &lt;0-23&gt; [&lt;0-59&gt;] no clock timezone WORD</pre>	This command configures timezone in global mode, the no command deletes the configured timezone.

## 5. To configure NTP access control list

Command	Explication
Global Mode	
<pre>ntp access-group server &lt;acl&gt; no ntp access-group server &lt; acl&gt;</pre>	To configure NTP server access control list.

## 6. To configure NTP authentication

Command	Explication
Global Mode	
<code>ntp authenticate</code> <code>no ntp authenticate</code>	To enable NTP authentication function.
<code>ntp authentication-key &lt;key-id&gt;</code> <code>md5 &lt;value&gt;</code> <code>no ntp authentication-key &lt;key-id&gt;</code> <code>id&gt;</code>	To configure authentication key for NTP authentication.
<code>ntp trusted-key &lt;key-id&gt;</code> <code>no ntp trusted-key &lt;key-id&gt;</code>	To configure trusted key.

## 7. To specified some interface as NTP broadcast/multicast client interface

Command	Explication
vlan Configuration Mode	
<code>ntp broadcast client</code> <code>no ntp broadcast client</code>	To configure specified interface to receive NTP broadcast packets.
<code>ntp multicast client</code> <code>no ntp multicast client</code>	To configure specified interface to receive NTP multicast packets.
<code>ntp ipv6 multicast client</code> <code>no ntp ipv6 multicast client</code>	To configure specified interface to receive IPv6 NTP multicast packets.

## 8. To configure some interface can't receive NTP packets

Command	Explication
vlan Configuration Mode	
<code>ntp disable</code> <code>no ntp disable</code>	To disable the NTP function.

### 9. To configure the request packet sending interval of ntp client

Command	Explication
Global Mode	
<pre>ntp syn-interval &lt;1-3600&gt; no ntp syn-interval</pre>	Configure the request packet sending interval of ntp client as 1s-3600s. The no command recovers to be the default value of 64s.

### 10. Display information

Command	Explication
Admin Mode	
<pre>show ntp status</pre>	To display the state of time synchronize.
<pre>show ntp session [ &lt;ip-address&gt;   &lt;ipv6-address&gt; ]</pre>	To display the information of NTP session.

### 11. Debug

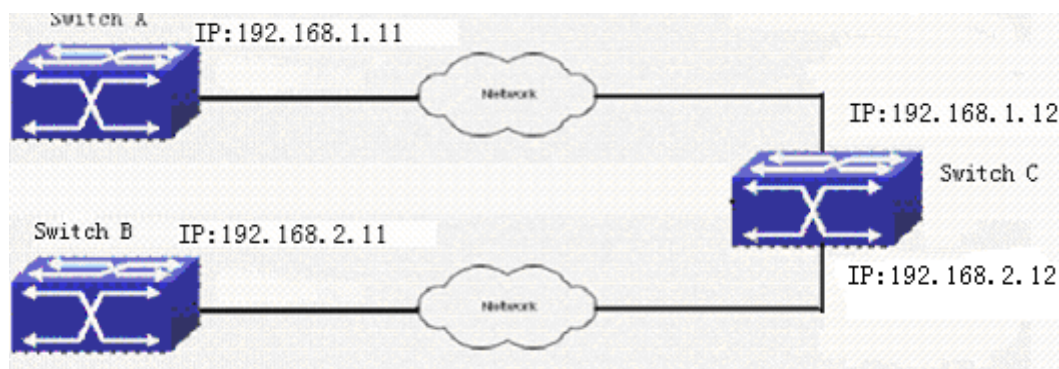
Command	Explication
Admin Mode	
<pre>debug ntp authentication no debug ntp authentication</pre>	To enable debug switch of NTP authentication.
<pre>debug ntp packets [send   receive] no debug ntp packets [send   receive]</pre>	To enable debug switch of NTP packet information.
<pre>debug ntp adjust no debug ntp adjust</pre>	To enable debug switch of time update information.
<pre>debug ntp sync no debug ntp sync</pre>	To enable debug switch of time synchronize information.



<pre>debug ntp events no debug ntp events</pre>	To enable debug switch of NTP event information.
---	--

### 2.3. Typical Examples of NTP Function

A client switch wanted to synchronize time with time server in network, there is two time server in network, the one is used as host, the other is used as standby, the connection and configuration as follows (Switch A and Switch B are the switch or route which support NTP server ):



The configuration of Switch C is as follows: (Switch A and Switch B may have the different command because of different companies, we not explain there, our switches are not support NTP server at present)

#### Switch C:

```
Switch(config)#ntp enable
Switch(config)#interface vlan 1
Switch(Config-if-Vlan1)#ip address 192.168.1.12 255.255.255.0
Switch(config)#interface vlan 2
Switch(Config-if-Vlan1)#ip address 192.168.2.12 255.255.255.0
Switch(config)#ntp server 192.168.1.11
Switch(config)#ntp server 192.168.2.11
```

### 2.4. NTP Function Troubleshooting

In configuration procedures, if there is error occurred, the system can give out the debug information.

The NTP function disables by default, the show command can be used to display current configuration. If the configuration is right please use debug every relative debugging command

and display specific information in procedure, and the function is configured right or not, you can also use show command to display the NTP running information, any questions please send the recorded message to the technical service center.

## 3. DNSV4/V6 CONFIGURATION

### 3.1. Introduction to DNS

DNS (Domain Name System) is a distributed database used by TCP/IP applications to translate domain names into corresponding IPv4/IPv6 addresses. With DNS, you can use easy-to-remember and signification domain names in some applications and let the DNS server translate them into correct IPv4/IPv6 addresses.

There are two types of DNS services, static and dynamic, which supplement each other in application. Each time the DNS server receives a name query it checks its static DNS database first before looking up the dynamic DNS database. Some frequently used addresses can be put in the static DNS database, the reduction the searching time in the dynamic DNS database would increase efficiency. The static domain name resolution means setting up mappings between domain names and IPv4/IPv6 addresses. IPv4/IPv6 addresses of the corresponding domain names can be found in the static DNS database when you use some applications. Dynamic domain name resolution is implemented by querying the DNS server. A user program sends a name query to the resolver in the DNS client when users want to use some applications with domain name, the DNS resolver looks up the local domain name cache for a match. If a match is found, it sends the corresponding IPv4/IPv6 address back to the switch. If no match is found, it sends a query to a higher DNS server. This process continues until a result, whether success or failure, is returned.

The Domain Name System (DNS) is a hierarchical naming system for computers, services, or any resource participating in the Internet. It associates various information with domain names assigned to such participants. Most importantly, it translates humanly meaningful domain names to the numerical (binary) identifiers associated with networking equipment for the purpose of locating and addressing these devices world-wide. An often used analogy to explain the Domain Name System is that it serves as the "phone book" for the Internet by translating human-friendly computer hostnames into IP addresses.

The Domain Name System makes it possible to assign domain names to groups of Internet users in a meaningful way, independent of each user's physical location. Because of this, World-Wide Web (WWW) hyperlinks and Internet contact information can remain consistent and constant even if the current Internet routing arrangements change or the participant uses a mobile device. Internet domain names are easier to remember than IP addresses such as 208.77.188.166 (IPv4) or 2001:db8:1f70::999:de8:7648:6e8 (IPv6). People take advantage of this when they recite meaningful URLs and e-mail addresses without having to know how the machine will actually locate them.

The Domain Name System distributes the responsibility for assigning domain names and mapping them to Internet Protocol (IP) networks by designating authoritative name servers for each domain to keep track of their own changes, avoiding the need for a central register to be continually consulted and updated.

In general, the Domain Name System also stores other types of information, such as the list of mail servers that accept email for a given Internet domain. By providing a world-wide, distributed keyword-based redirection service, the Domain Name System is an essential component of the functionality of the Internet.

### 3.2. DNSv4/v6 Configuration Task List

1. To enable/disable DNS function
2. To configure/delete DNS server
3. To configure/delete domain name suffix
4. To delete the domain entry of specified address in dynamic cache
5. To enable DNS dynamic domain name resolution
6. Enable/disable DNS SERVER function
7. Configure the max number of client information in the switch queue
8. Configure the timeout value of caching the client information on the switch
9. Monitor and diagnosis of DNS function

#### 1. To enable/disable DNS function

Command	Explanation
Global Mode	
<code>ip domain-lookup</code> <code>no ip domain-lookup</code>	To enable/disable DNS dynamic lookup function.

#### 2. To configure/delete DNS server

Command	Explanation
Global Mode	
<code>dns-server {&lt;ip-address&gt;   &lt;ipv6-address&gt;} [priority &lt;value&gt;]</code> <code>no dns-server {&lt;ip-address&gt;   &lt;ipv6-address&gt;}</code>	To configure DNS server, the no form of this command deletes DNS server.

**3. To configure/delete domain name suffix**

Command	Explanation
Global Mode	
<code>ip domain-list &lt;WORD&gt;</code> <code>no ip domain-list &lt;WORD&gt;</code>	To configure/delete domain name suffix.

**4. To delete the domain entry of specified address in dynamic cache**

Command	Explanation
Admin Mode	
<code>clear dynamic-host {&lt;ip-address&gt;   &lt;ipv6-address&gt;   all}</code>	To delete the domain entry of specified address in dynamic cache.

**5. To enable DNS dynamic domain name resolution**

Command	Explanation
Global Mode	
<code>dns lookup {ipv4   ipv6} &lt;hostname&gt;</code>	To enable DNS dynamic domain name resolution.

**6. Enable/disable DNS SERVER function**

Command	Explanation
Global Mode	
<code>ip dns server</code> <code>no ip dns server</code>	Enable/disable DNS SERVER function.

**7. Configure the max number of client information in the switch queue**

Command	Explanation
Global Mode	
<code>ip dns server queue maximum &lt;1-5000&gt;</code> <code>no ip dns server queue maximum</code>	Configure the max number of client information in the switch queue.

## 8. Configure the timeout value of caching the client information on the switch

Command	Explanation
<b>Global Mode</b>	
<pre>ip dns server queue timeout &lt;1-100&gt; no ip dns server queue timeout</pre>	Configure the timeout value of caching the client information on the switch.

## 9. Monitor and diagnosis of DNS function

Command	Explanation
<b>Admin Mode and Configuration Mode</b>	
<pre>show dns name-server</pre>	To show the configured DNS server information.
<pre>show dns domain-list</pre>	To show the configured DNS domain name suffix information.
<pre>show dns hosts</pre>	To show the dynamic domain name information of resolved by switch.
<pre>show dns config</pre>	Display the configured global DNS information on the switch.
<pre>show dns client</pre>	Display the DNS Client information maintained by the switch.
<pre>debug dns {all   packet [send   rcv]   events   relay} no debug dns {all   packet [send   rcv]   events   relay}</pre>	To enable/disable DEBUG of DNS function.

### 3.3. Typical Examples of DNS

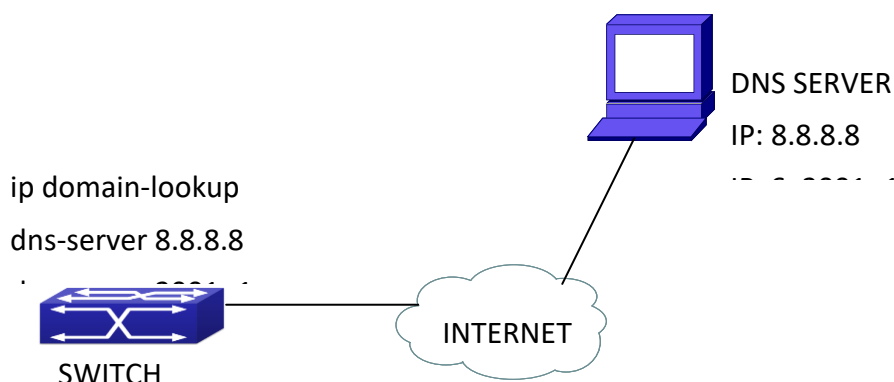


Fig 3-1 DNS CLIENT typical environment

As shown in fig, the switch connected to DNS server through network, if the switch want to visit sina Website, it needn't to know the IPv4/IPv6 address of sina Website, only need is to record the domain name of sina Website is www.sina.com.cn. The DNS server can resolute out the IPv4/IPv6 address of this domain name and send to switch, then the switch can visit sina Website correctly. The switch is configured as DNS client, basic configurations are as below: first to enable DNS dynamic domain name resolution function on switch, and configure DNS server address, then with some kinds of tools such as PING, the switch can get corresponding IPv4/IPv6 address with dynamic domain name resolution function.

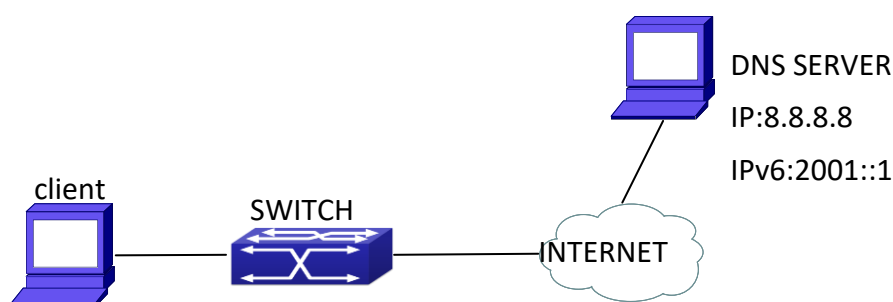


Fig 3-2 DNS SERVER typical environment

The figure above is an application of DNS SERVER. Under some circumstances, the client PC doesn't know the real DNS SERVER, and points to the switch instead. The switch plays the role of a DNS SERVER in two steps: Enable the global DNS SERVER function, configure the IP address of the real DNS server. After the DNS SERVER function is globally enabled, the switch will look up its local cache when receiving a DNS request from a client PC. If there is a domain needed by the local client, it will directly answer the client's request; otherwise, the switch will relay the request to the real DNS server, pass the reply from the DNS Server to the client and record the domain and its IP address for a faster lookup in the future.

Switch configuration for DNS CLIENT:

```
Switch(config)# ip domain-lookup
Switch(config)# dns-server 8.8.8.8
Switch(config)# dns-server 2001::1
Switch#ping host www.ya.ru
Switch#traceroute host www.ya.ru
Switch#telnet host www.ya.ru
```

Switch configuration for DNS SERVER:

```
Switch(config)# ip domain-lookup
Switch(config)# dns-server 8.8.8.8
Switch(config)# dns-server 2001::1
Switch(config)# ip dns server
```

### 3.4. DNS Troubleshooting

In configuring and using DNS, the DNS may fail due to reasons such as physical connection failure or wrong configurations. The user should ensure the following:

- First make sure good condition of the TACACS+ server physical connection;
- Second all interface and link protocols are in the UP state (use “**show interface**” command);
- Then please make sure that the DNS dynamic lookup function is enabled (use the “ip domain-lookup” command) before enabling the DNS CLIENT function. To use DNS SERVER function, please enable it (use the “ip dns server” command);
- Finally ensure configured DNS server address (use “**dns-server**” command), and the switch can ping DNS server;
- If the DNS problems remain unsolved, please use debug DNS all and other debugging command and copy the DEBUG message within 3 minutes, send the recorded message to the technical service center of our company.



## 4. SUMMER TIME CONFIGURATION

### 4.1. Introduction to Summer Time

Summer time is also called daylight saving time, it is a time system for saving energy sources. In summer the time is advanced 1 hour to keep early hours, reduce the lighting, so as to save electrolighting. The rule that adopt summer time is different in each country. At present, almost 110 countries implement summer time.

Compare with the standard time, usually set summer time 1 hour late, for example, when summer time is implementing, 10:00 am of the standard time is considered 11:00 am of summer time.

### 4.2. Summer Time Configuration Task Sequence

#### 1. Configure absolute or recurrent time range of summer time

Command	Explanation
Global Mode	
<pre>clock      summer-time    &lt;word&gt; absolute  &lt;HH:MM&gt;        &lt;YYYY.MM.DD&gt; &lt;HH:MM&gt; &lt;YYYY.MM.DD&gt; [&lt;offset&gt;] no clock  summer-time</pre>	Set absolute time range of summer time, start and end summer time is configured with specified year.
<pre>clock      summer-time    &lt;word&gt; recurring &lt;HH:MM&gt;        &lt;MM.DD&gt; &lt;HH:MM&gt; &lt;MM.DD&gt; [&lt;offset&gt;] no clock  summer-time</pre>	Set recurrent time range of summer time, every year the summer time begins from the start time and end at the end time.
<pre>clock      summer-time    &lt;word&gt; recurring &lt;HH:MM&gt; &lt;week&gt; &lt;day&gt; &lt;month&gt; &lt;HH:MM&gt; &lt;week&gt; &lt;day&gt; &lt;month&gt; [&lt;offset&gt;] no clock  summer-time</pre>	Set recurrent time range of summer time, every year the summer time begins from the start time and end at the end time.

### 4.3. Examples of Summer Time

#### ❖ Example1:

The configuration requirement in the following: The summer time from 23:00 on April 1th, 2012 to 00:00 on October 1th, 2012, clock offset as 1 hour, and summer time is named as 2012.

Configuration procedure is as follows:

```
Switch(config)# clock summer-time 2012 absolute 23:00 2012.4.1 00:00  
2012.10.1
```

#### ❖ Example2:

The configuration requirement in the following: The summer time from 23:00 on the first Saturday of April to 00:00 on the last Sunday of October year after year, clock offset as 2 hours, and summer time is named as time\_travel.

Configuration procedure is as follows:

```
Switch(config)#clock summer-time time_travel recurring 23:00 first sat apr  
00:00 last sun oct 120
```

## 4.4. Summer Time Troubleshooting

If there is any problem happens when using summer time, please check whether the problem is caused by the following reasons:

- Check whether command mode in global mode
- Check whether system clock is correct